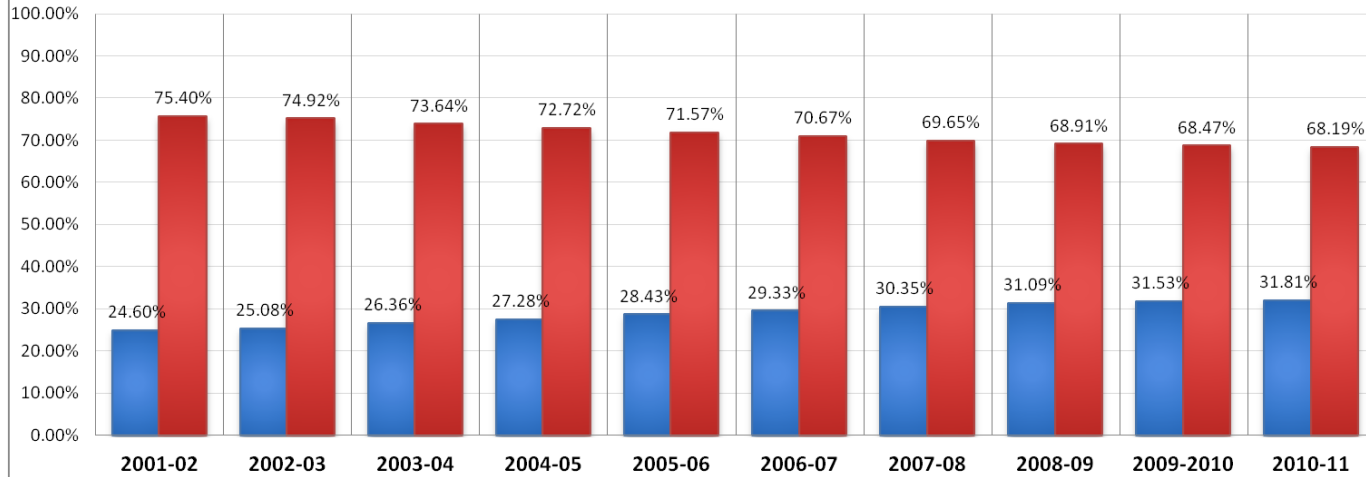


2001-2011

UNIVERSITY of CALIFORNIA IRVINE
Campuswide

■ Female ■ Male



Campuswide

2001-2011 Faculty Headcount by Rank and Gender

	AY 2001-02		AY 2002-03		AY 2003-04		AY 2004-05		AY 2005-06		AY 2006-07		AY 2007-08		AY 2008-09		AY 2009-10		AY 2010-11		
	FTE	%	FTE	%	FTE	%	FTE	%	FTE	%	FTE	%	FTE	%	FTE	%	FTE	%	FTE	%	
Assistant Professor																					
Female	59	30.89%	67	31.16%	74	32.03%	89	35.46%	95	39.26%	93	39.08%	104	43.33%	112	43.92%	110	46.41%	98	48.28%	
Male	132	69.11%	148	68.84%	157	67.97%	162	64.54%	147	60.74%	145	60.92%	136	56.67%	143	56.08%	127	53.59%	105	51.72%	
Total	191	100.00%	215	100.00%	231	100.00%	251	100.00%	242	100.00%	238	100.00%	240	100.00%	255	100.00%	237	100.00%	203	100.00%	
Associate Professor																					
Female	65	34.57%	62	32.98%	66	34.38%	68	34.87%	73	35.27%	83	37.56%	93	37.35%	94	36.72%	92	35.94%	95	38.78%	
Male	123	65.43%	126	67.02%	126	65.63%	127	65.13%	134	64.73%	138	62.44%	156	62.65%	162	63.28%	164	64.06%	150	61.22%	
Total	188	100.00%	188	100.00%	192	100.00%	195	100.00%	207	100.00%	221	100.00%	249	100.00%	256	100.00%	256	100.00%	245	100.00%	
Full Professor																					
Female	92	18.44%	101	19.65%	112	21.01%	115	20.91%	120	21.28%	129	22.20%	129	22.05%	140	23.26%	147	23.86%	147	23.60%	
Male	407	81.56%	413	80.35%	421	78.99%	435	79.09%	444	78.72%	452	77.80%	456	77.95%	462	76.74%	469	76.14%	476	76.40%	
Total	499	100.00%	514	100.00%	533	100.00%	550	100.00%	564	100.00%	581	100.00%	585	100.00%	602	100.00%	616	100.00%	623	100.00%	
Total																					
Female	216	24.60%	230	25.08%	252	26.36%	272	27.31%	288	28.43%	305	29.33%	326	30.35%	346	31.09%	349	31.47%	340	31.75%	
Male	662	75.40%	687	74.92%	704	73.64%	724	72.69%	725	71.57%	735	70.67%	748	69.65%	767	68.91%	760	68.53%	731	68.25%	
Total	878	100.00%	917	100.00%	956	100.00%	996	100.00%	1013	100.00%	1040	100.00%	1074	100.00%	1113	100.00%	1109	100.00%	1071	100.00%	